

Product Guide

User and
Maintenance
Information

IMPORTANT INFORMATION:

Please save this product guide. Consider making a photocopy in order to keep one copy with the product and file the other for future reference.

CUSTOMER CENTRES

United States

359 Gibson Hill Road

Chester, NY 10918

Office hours: 9-5 EST

Phone (800) 777-4244

Fax (800) 336-5948

(845) 572-3468

www.CommunityPlaythings.com

United Kingdom

Robertsbridge

E. Sussex TN32 5DR

Phone 0800 387 457

Fax +44 (0)1304 843 731

www.communityplaythings.co.uk

sales@communityplaythings.co.uk



**community
playthings**

A727 Wall Pegs with Pockets 6

A728 Wall Pegs with Pockets 8

A737 Wall Pegs 6

A738 Wall Pegs 8

A721 Four Extra Name Covers

Recommended Use

These wall-mounted units are designed for situations where a full-size freestanding unit would be impractical because of limited floor space or budget. The name holders provide an easy way to personalize the space for each child. The top "pockets" are for letters home, hats or gloves.

Products consist of the following:

A727 Wall Pegs with Pockets 6

A737 Wall Pegs 6 – including:

Three clear plastic Name Covers.

A728 Wall Pegs with Pockets 8

A738 Wall Pegs 8 – including:

Four clear plastic Name covers.

A721 Four Extra Name Covers

If your shipment is incomplete, please call your Customer Center.

⚠ WARNING

- ▲ This product is intended for use by children of immature judgment, therefore supervision is required at all times. Never install these units with children nearby.

⚠ CAUTION

- ▲ For indoor use only. The Wall Pegs and Wall Pegs with Pockets are not weather proof.

Maintenance

Periodically inspect for cracks, breaks, and loose or missing parts. Also check that the unit remains securely mounted to the wall. Remove the product from service when any condition develops that might make operation unsafe.

Cleaning

Clean with mild detergent and water. Too much water will harm the finish of the wood. Vacuum the top pockets.

Construction

The wooden components are manufactured from solid birch and birch plywood protected with a durable clear finish. All edges and corners are rounded for safety and ease of cleaning. The hooks, name covers and dividers are plastic.

Accessories

A721 Four Extra Name Covers

Extra name covers are useful when different children use the Pegs and Pockets. Tape a child's name and/or picture to the name covers and change covers as needed.

- A727 Wall Pegs with Pockets 6
- A728 Wall Pegs with Pockets 8
- A737 Wall Pegs 6
- A738 Wall Pegs 8
- A721 Four Extra Name Covers

CUSTOMER CENTRES

United States

359 Gibson Hill Road
Chester, NY 10918

Office hours: 9-5 EST

Phone (800) 777-4244

Fax (800) 336-5948

(845) 572-3468

www.CommunityPlaythings.com

United Kingdom

Robertsbridge

E. Sussex TN32 5DR

Phone 0800 387 457

Fax +44 (0)1304 843 731

www.communityplaythings.co.uk

sales@communityplaythings.co.uk



community playthings

Installation

A competent carpenter or maintenance person should do the installation.

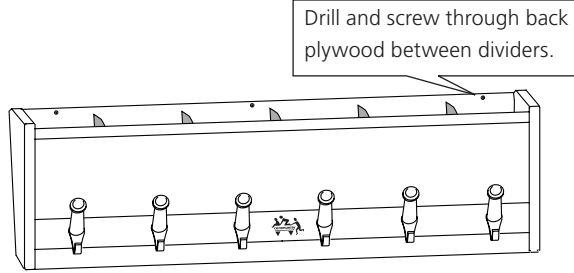


Figure A

Wall Pegs with Pockets

1. Position Wall Pegs with Pockets at the desired place on the wall.
2. Locate the fasteners (not included) to suit the wall construction, with at least one fastener near each end of the unit as shown in Figure A.
3. Pre-drill the plywood back on the Wall Pegs with Pockets at these locations.
4. Attach the Wall Pegs with Pockets to the wall with fasteners appropriate to the wall construction and the weight of the fully loaded unit.

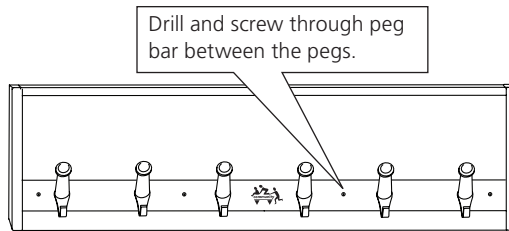


Figure B

Wall Pegs

1. Position Wall Pegs at the desired place on the wall.
2. Locate the fasteners (not included) to suit the wall construction, with at least one fastener near each end of the unit as shown in Figure B.
3. Pre-drill the piece of wood with the pegs in at these locations.
4. Attach the Wall Pegs to the wall with fasteners appropriate to the wall construction and the weight of the fully loaded unit.

⚠ WARNING

- ▲ The Wall Pegs with Pockets and Wall Pegs must be properly mounted before use. The customer must assume full responsibility that the unit will be secure for the long term.

Operation

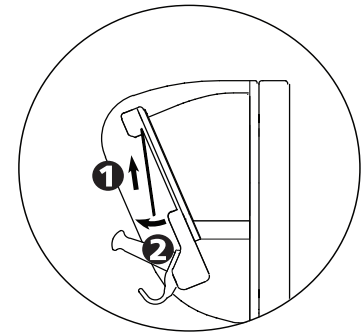


Figure C

Removal of name covers

To remove the name cover push it up into the top slot and pull the bottom edge forward. To install a name cover push it up into the top slot and push the bottom edge in, and then slide the name cover down into the bottom slot. See Figure C.

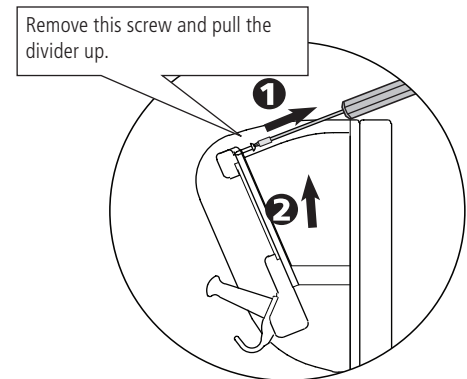


Figure D

Removal of dividers

Every other divider between the top pockets can be removed to give more space per child if needed. See Figure D.

⚠ CAUTION

- ▲ There should be at least 2 dividers left in the unit for strength.

User Modifications

We recognize that some users might benefit from modifications made in the field. However, we cannot be responsible for modifications made by customers to our products, without our supervision, testing or evaluation.

Ordering Parts

To order replacement parts, contact your Customer Center with a description of the part(s) needed and the ID Code from the product.

Use only replacement parts supplied by Community Playthings.